

# Programme - July to December 2013

## SEEING WITH ANOTHER PAIR OF EYES TOUCH.. LOOK... LISTEN

30 July to 1 September

Showcasing Art that appeals to a multitude of senses and is inclusive to all. This was the challenge we gave to teachers and pupils from Manor Mead and Sunbury Manor schools. The brief was to design and create a visual and tactile art piece with an audio component. The project led by Artist Stuart Simler was instigated by the Sunbury Gallery. The finished work sits alongside a prestigious collection of Art work produced by blind Artists on loan from Moorfields Eye hospital, donated by Blind Art a registered charity.



There are additional individual pieces by blind artists Annie Fennymore and recent graduate Amanda Pearce. Amanda uses braille as an art form and questions whether we should all learn to read braille.

Annie Fennymore lost her sight over a number of years leaving her only with a small amount of light sensitivity. Her extraordinary art work has received much acclaim. A warm and vibrant personality Annie responded to this project with great enthusiasm and insight. 'Whatever you want to do, do it because you want to, and do it with love because it will show!'

Come along and enjoy the experience and to share your experience with us.

The project is sponsored by the Friends of SME and Trustees of the Millennium Embroidery Group. Untitled by Annie Fennymore ▶

## MY JOURNEY: TREE-PAPER-BOOK EWA MORAWSKI embroiderer/textile designer MALI - conceptual artist

17 September to 13 October

This exhibition is a personal expression of visual experiences of nature and concern about the environment, raising awareness in connection with paper production and its consumption. Using tree images as a starting point of a journey leading to book making and thus connecting with Mali's books as his subject matter.

Mumbai born Mali is a familiar figure on the London circuit and his Books and conceptual pieces are a constant source of inspiration to others. Over the years Mali has transformed books and pages to creative innovative Art forms using discarded paper and printed material.

This latest collaboration with Polish born Designer Ewa Morawski brings together two very gifted artists each expressing their concerns in contrasting art forms. Ewa uses her embroidery skills to produce pieces which involve drawing, manipulation and fusion of various mixed media techniques.



## MOMENT AND LIGHT ROBERT SHAW - PHOTOGRAPHER

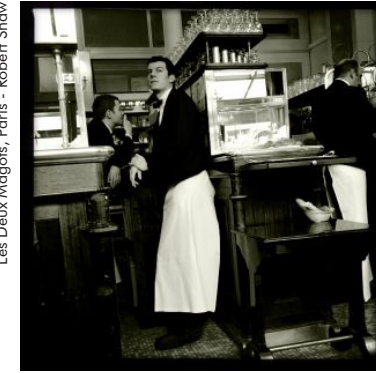
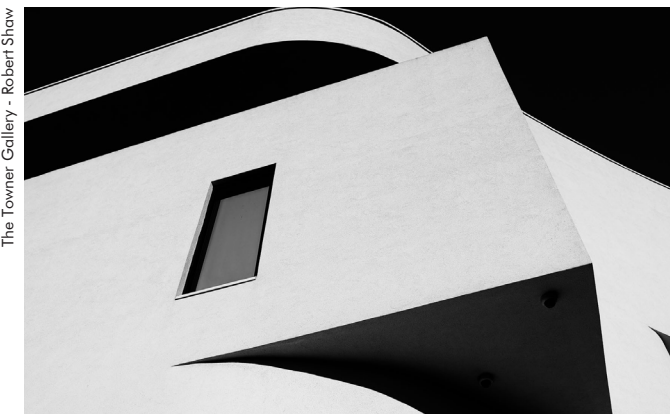
15 October to 10 November

An exhibition of photographs in black and white by architect and photographer Robert Shaw.

'The joy of black and white is that it leaves things out. It disconnects the moment from the narrative around it. The photograph then becomes about composition rather than about colour or other distractions. It is about shape and feeling.'

'All the photographs are taken with small fixed lens cameras. They are light to carry around and great for spontaneity. The photograph is fleeting, even with buildings that don't move around much. It is all about the moment and light.'

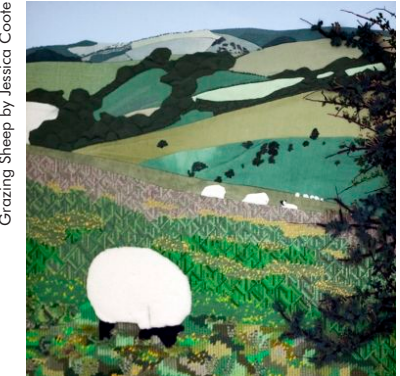
The images are all from the past few years of cities and landscapes around the world. Often dramatically lit the architectural qualities of both express simple abstract shape and form.



## MOODS OF THE SOUTH DOWNS JESSICA COOTE - TEXTILE ARTIST

19 November to 15 December

After many years living in Provence Jessica Coote returned to Sussex and settled in Brighton and rediscovered the richness and beauty of the South



Grazing Sheep by Jessica Coote

Field of Yellow Flowers by Jessica Coote

Downs. Since childhood she has been inspired by the changing moods of the downs, and fascinated by the diverse range of flora and fauna which thrive there. To her delight in 2011 the South Downs received National Park status. Jessica produced Textile landscapes in celebration of this event.

The South downs remain a constant lure and source of inspiration. Her role as a conservation volunteer allows her lots of time in the countryside studying landscape and often making meticulous drawings of fragile native plants in preparation for her next piece of work. Predominantly working as a creative hand embroiderer and textile artist, Jessica also loves painting watercolours. Each piece she produces reflects the passion she retains for the South downs.

# JULY TO DECEMBER 2013

The Gallery is closed Mondays and Bank Holidays

## Gold Work with Sophie Long

Saturday 26 October

Learn Goldwork embroidery and create your own unique piece of work.

£50.00 includes kit.

## Beading Group Annual Christmas Sale

Tuesday 5 November 10am to 4pm

The regular beading group will again be producing a range of original hand made gifts at this one day sale. Ideal stocking fillers for Christmas.

Proceeds in aid of the Sunbury Millennium Embroidery.



## Stumpwork with Sophie Long

Saturday 16 November

STUMPWORK, also known as raised embroidery using a variety of different materials and embroidery techniques to create a contemporary piece of work

£45.00 includes materials.

TO BOOK WORKSHOPS taking place in the Gallery telephone 01932 788101 or email [barbara@sunburygallery.plus.com](mailto:barbara@sunburygallery.plus.com)

## Gallery Christmas closing

Last day Sunday 22 December and open again on Tuesday 7 January 2014

# Information

The Embroidery is on display all year round at:

The Sunbury Embroidery Gallery  
The Walled Garden  
Thames Street  
Sunbury-on-Thames  
TW16 6AB

The Sunbury Embroidery is a registered charity

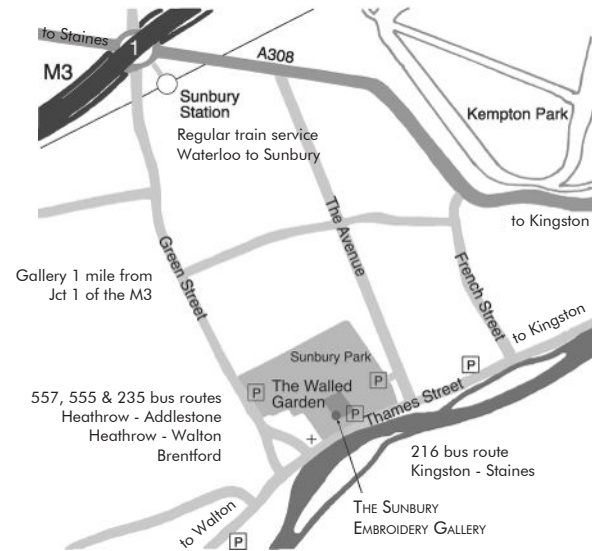
Open Tuesday to Sunday 10.00am - 5.00pm (summer)  
10.00am - 4.00pm (winter)

Phone for details times, group visits, events, etc.  
Admission FREE  
tel 01932 788101  
web [www.sunburyembroidery.org.uk](http://www.sunburyembroidery.org.uk)  
email [gallery@sunburygallery.plus.com](mailto:gallery@sunburygallery.plus.com)

TO BOOK WORKSHOPS taking place in the Gallery telephone 01932 788101 or email [barbara@sunburygallery.plus.com](mailto:barbara@sunburygallery.plus.com) or ask in person on your next visit.

## GROUP BOOKINGS & TALKS

Regular talks on the Sunbury Millennium Embroidery are given by our experienced volunteers and last approximately 20 minutes. Why not combine your visit with a set lunch or afternoon tea (home made) followed by a walk around the historic walled garden. We can comfortably accommodate parties of up to 12. Booking essential. Booking form available on request. Talks are free, but any donations are gratefully received. The Gallery is closed Mondays and Bank Holidays.



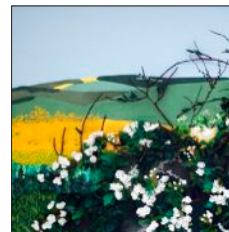
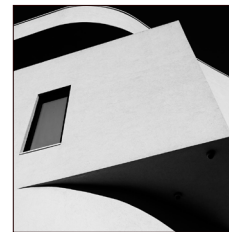
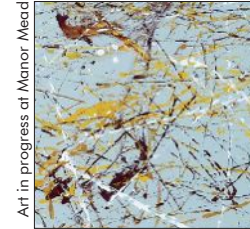
Design - Robert Shaw

©The Sunbury Millennium Embroidery 2013 - Registered Charity No. 1085014

# THE SUNBURY EMBROIDERY GALLERY

## PROGRAMME OF EVENTS

2013  
JULY  
to  
DECEMBER



## THE SUNBURY EMBROIDERY GALLERY

The Walled Garden  
Sunbury TW16 6AB

# WORKSHOPS AT THE GALLERY

Workshops 10am to 3pm unless otherwise stated

## Calico Workshops

Tuesdays with Linda Robinson

15 October, 12 November, 3 December

BEGINNERS AND EXPERIENCED EMBROIDERERS WELCOME

1.30pm to 4.00pm £36.00 for three sessions.

## 'Seascapes'

Mixed Media with Valentina Brünn

TWO WORKSHOPS TO BE LINKED TOGETHER ON

Saturday 7 & 14 September

WORKSHOP 1: PAINTED BONDWEB USING ACRYLIC PAINTS

WORKSHOP 2: EMBELLISHING THE ABOVE. TYVEK/MIXED MEDIA

£85.00 for two sessions. Basic kit included.

## 'Tree of Life' crewel workshop

Sophie Long

Saturday 21 September

INSPIRED by 'My Journey: Tree-Paper-Book' exhibition in the gallery. Suitable for beginners and experienced.

£45.00 including kit.



## Photographic Textile Workshop

Linda Walsh

Saturday 19 October

CREATE a textile piece using a photograph. Discover how to use computer printed fabrics and make a small stitched picture.

£45.00 including materials.